

Express WET AREA TAPE



DUNLOP EXPRESS WET AREA TAPE is a self-adhesive sealing tape that provides a waterproofing seal between the surface joints of the floor and wall, under shower grates and outlets in wet areas such as bathrooms, kitchens and laundries. Use in conjunction with DUNLOP EXPRESS WET AREA WATERPROOFING MEMBRANE for a rapid, total express waterproofing system and tiling can commence after 4 hours. Using this tape in conjunction with the DUNLOP EXPRESS WET AREA WATERPROOFING MEMBRANE meets the standard for waterproofing according to the Australian Build- ing standards.

SUITABLE SURFACES

Internal fibre-cement wall sheet, compressed fibre-cement sheets, wet area grade plasterboard, concrete (cured for min. 28 days), renders and screeds (cured for min. 7 days) and internal AAC blocks and panels.

MINIMUM AREAS TO WATERPROOF

Always refer to the local government regulations including AS3740-2010 for the requirements of any waterproofing project.

SURFACE PREPARATION

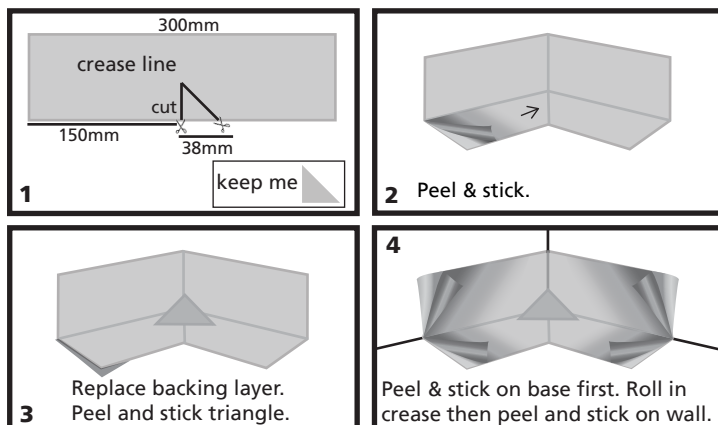
Surfaces must be sound and dry and all sheeting materials must be installed to manufacturer's instructions. Remove all contaminating materials such as dust, oil, paint and curing compounds. Prime all areas to be waterproofed with DUNLOP PRIMER & ADDITIVE according to the instructions on the container and datasheet. AAC blocks will require two coats of DUNLOP PRIMER & ADDITIVE. Plastic (PVC) fittings should be wiped down with methylated spirits and treat metal surfaces with a suitable metal primer.

COVERAGE

The DUNLOP EXPRESS WET AREA TAPE will cover up to 10m. A standard shower recess of 1.8m height will require approximately 7m of tape. Overlapping of tape to be a minimum of 15mm.

TILING

Prior to tiling the application of DUNLOP EXPRESS WET AREA WATERPROOFING MEMBRANE is required as part of the Express Waterproofing system.



How to form and install a corner detail for all 90° corner joints

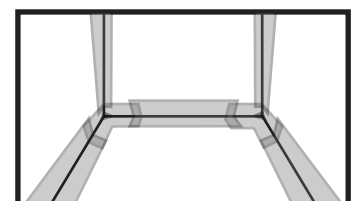
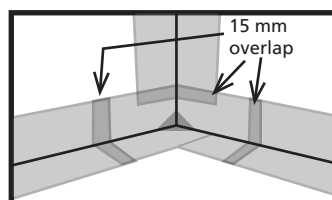
Forming:

1. Cut to 300mm in length. Cut up centre of tape to 2mm before the middle crease line. Cut again at 45° and remove triangular piece. **2.** Peel and stick left base section under the right base section to form a 90° corner. Replace backing layer on exposed left base "sticky" face. **3.** Stick triangular section into the internal corner just formed ensuring the internal corner is covered, press down firmly.

Installation:

Allow primer to thoroughly dry before installation of tape.

4. Peel back base backing layers and position exactly then stick down into corner. Using a roller, roll along the right angle creases. Peel back top backing layer and stick down, press down firmly.



How to prepare and install horizontal and vertical tape sections:

Measure and cut the length between the corner sections plus allow a minimum of 15mm overlap on both ends (e.g length = 1.8m + 15mm (left) + 15mm (right) = 1.83m) or 80mm above the shower rose for the vertical section.

Installation:

1. Peel back white base backing layer, position exactly and stick down, with a minimum 15mm overlap. **2.** Using a roller, roll along the right

Note: There is no requirement for the use of neutral cure silicone as a bond breaker to joints when using the DUNLOP EXPRESS WET AREA TAPE, as this tape is highly flexible. For more detailed information on how to prepare and install shower joints, grates and tap outlets and aluminum or PVC shower or door stop angles visit www.dunlopdiy.com.



Express **WET AREA TAPE**

After application of the DUNLOP EXPRESS WET AREA TAPE.
Apply DUNLOP EXPRESS WET AREA WATERPROOFING MEM-
BRANE as per label instructions and datasheet.

USER NOTES

The technical details and recommendations contained in this data sheet are given in good faith and represent the best of our knowledge and experience at the time of publishing. It is the responsibility of the user to ensure that the products are used in accordance with DUNLOP product instructions and in applications for which they are intended.

ARDEX Australia Pty Ltd. ABN 82 000 550 005
7/20 Powers Road
Seven Hills NSW 2147
Ph: 1300 788 780
TOLL FREE HOTLINE
1800 222 841 (AU)

ARDEX New Zealand Ltd 32 Lane St
Woolston
Christchurch NZ
Ph: (03) 373 6900
TOLL FREE HOTLINE
0800 224 070 (NZ)